

DP740

INSTRUCTION MANUAL

Please read this manual carefully before operation

PRECAUTIONS

CAUTION: TO REDUCE THE RISK OF FIRE AND ELECTRIC SHOCK, DO NOT REMOVE THE COVER (OR BACK) OF THE UNIT. REFER SERVICING ONLY TO QUALIFIED SERVICE PERSONNEL.

The lightning flash with arrowhead symbol within an equilateral triangle is intended to alert the user to the presence of unshielded "dangerous voltage" within the product's enclosure that may be of sufficient magnitude to constitute a risk of electric shock.

For Customer Use: Enter below the serial number that is located on the bottom of the unit. Model No. DP740

For recycling or disposal information about this product, please contact your local authorities or the Electronics Industries Alliance: www.eia.org.

PRECAUTIONS

WARNING: To prevent fire or shock hazard, do not expose this device to rain or moisture. Dangerous high voltage is present inside the enclosure. Do not open the cabinet.

FCC Statement: This device complies with Part 15 of the FCC Rules. Operation is subject to the following two conditions: (1) This device may not cause harmful interference, and (2) This device must accept any interference received, including interference that may cause undesired operation.

Note: This equipment has been tested and found to comply with the limits for Class B digital devices, pursuant to Part 15 of the FCC rules. These limits are designed to provide reasonable protection against harmful interference in a residential installation.

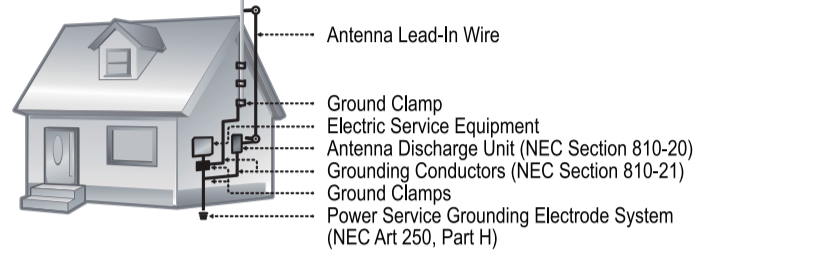
IMPORTANT SAFETY INSTRUCTIONS

- 1. Read Instructions: All the safety and operating instructions should be read before the product is operated.
2. Retain Instructions: The safety and operating instructions should be retained for future reference.
3. Head Warnings: All warnings on the product and in the operating instructions should be adhered to.
4. Follow Instructions: All operating and usage instructions should be followed.
5. Cleaning: Unplug this product from the wall outlet before cleaning. Do not use liquid cleaners or aerosol cleaners. Use a damp cloth for cleaning.
6. Attachments: Use only attachments recommended by the manufacturer. Use of other attachments may be hazardous.
7. Water and Moisture: Do not use this product near water (e.g., near a bath tub, washbowl, kitchen sink, laundry tub, in wet basements, or near a swimming pool and the like).
8. Accessories: Do not place this product on an unstable cart, stand, tripod, bracket, or table. Use only with carts, stands, tripods, brackets, or tables recommended by the manufacturer or sold with the product.
9. A product and cart combination should be moved with care. Quick stops, excessive force, and uneven surfaces may cause the product and cart combination to overturn.
10. Ventilation: Slots and openings in the cabinet are provided for ventilation to ensure reliable operation of the product and to protect it from overheating.
11. Power Sources: This product should be operated only from the type of power source indicated on the rating label.



IMPORTANT SAFETY INSTRUCTIONS

- 12. Grounding or Polarization: This product may be equipped with a polarized alternating-current line plug that has one blade wider than the other. This plug will only fit into the power outlet and is intended for your protection.
13. Power-Cord Protection: Power supply cords should be routed so that they are not likely to be walked on or tripped over.
14. Protective Attachment Plug: The product may be equipped with an attachment plug with overload protection. This is a safety feature.
15. Outdoor Antenna Grounding: If an outside antenna is connected to the product, be sure the antenna system is grounded so as to provide some protection against voltage surges and built-up static charges.



IMPORTANT SAFETY INSTRUCTIONS

- 16. Lighting: For added protection for this product, unplug it from the wall outlet and disconnect the antenna or cable system during a lightning storm or when it is left unattended and unused for long periods of time.
17. Power Lines: An outside antenna system should not be located in the vicinity of overhead power lines or other electric light or power circuits.
18. Overloading: Do not overload wall outlets, extension cords, or integral convenience receptacles as this can result in a risk of fire or electric shock.
19. Object and Liquid Entry: Never push objects or any kind into this product through openings as they may touch dangerous voltage points or short out parts that could result in a fire or electric shock.
21. Damage Requiring Service: Unplug this product from the wall outlet and refer servicing to qualified service personnel under the following conditions: a) when the power supply cord or plug is damaged, b) liquid has been spilled on or objects have fallen into the product, c) the product has been exposed to rain or water, d) the product does not operate normally by following the operating instructions, e) if the product has been dropped or damaged in any way, f) when the product exhibits a distinct change in performance—this indicates a need for service.

IMPORTANT SAFETY INSTRUCTIONS

- 24. Wall or Ceiling Mounting: The product should be mounted to a wall or ceiling only as recommended by the manufacturer.
25. Heat: The product should be situated away from heat sources such as radiators, heat registers, stoves, or other products (including amplifiers) that produce heat.

TABLE OF CONTENTS

PRECAUTIONS 2
IMPORTANT SAFETY INSTRUCTION 4
TABLE OF CONTENTS 8
PACKAGE CONTENTS 9
FEATURES 10
UNIT VIEW 11
GETTING STARTED 12
Installing a Memory Card 12
Powering Your Digital Photo Frame 12
Turning Your Photo Frame On/Off 12
Photo 13
Change View 13
Zoom 14
CALENDAR 15
SETUP 16
Photo Setup 16
Calendar Setup 17
System Setup 18
Using the Kickstand 19
TROUBLESHOOTING 20
SPECIFICATION 20

SPECIFICATION

Display Type: 7" Full Color TFT LCD
Display Resolution: 800x480
Memory: MS Card, SD/MMC/SD Card, Full-size USB
Photo Format: JPEG, JPG
USB Host: USB 2.0 High-Speed
Power Supply: DC 5V, 1A, 100-240V AC Adapter

Specifications and subject are subject to change without prior notice.

2

3

4

5

6

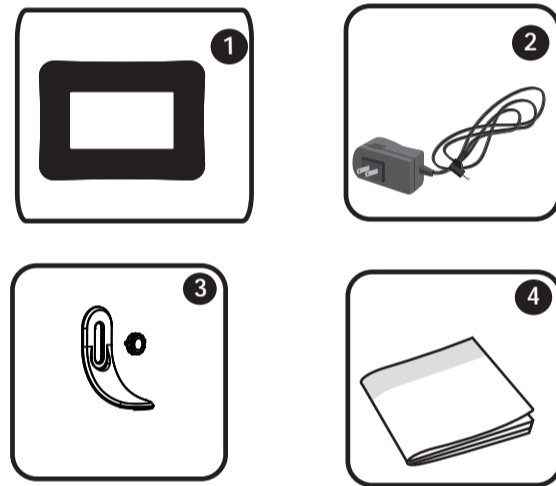
7

8

9

PACKAGE CONTENTS

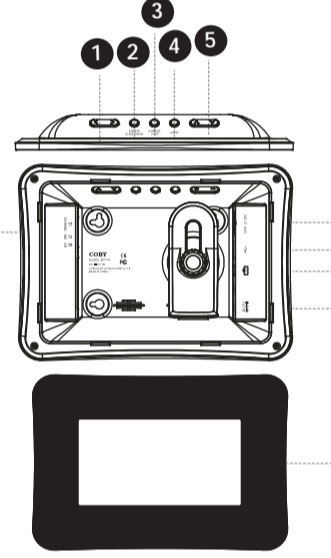
Please make sure that the items shown below are included in the package. Should an item be missing, please contact the retail retailer from which you purchased this product.



FEATURES

- 7" widescreen TFT LCD color display
Displays JPEG, JPG photo files
Photo slideshow mode
Calendar and clock with alarm timer
SD, MMC, MS, XD card slot
Full-size USB port for use with flash memory drives
Wall-mountable design with detachable stand

UNIT VIEW



- Function Buttons: 1. <- Button, 2. Enter/Slideshow, 3. Change View, 4. Menu.
4. Menu: Press to exit. On the Main Menu Screen, press this button to move the cursor to the memory choice list.
5. Down/Up button: Press to move the cursor down/up during menu selection.
6. Card slot: Connect the SD/MMC/MS/XD card.
7. Power switch: To turn photo frame on/off.
8. Full-size USB port: To connect with USB flash drives.
9. Mini-size USB port: To connect with computer.
10. Power Jack: Connect with the power source.
11. TFT Display.

GETTING STARTED

- Installing a Memory Card: Your picture frame supports the following types of memory cards: Memory Stick (MS), XD-Picture (XD), Secure Digital (SD), Multi Media Card (MMC), USB Flash Storage Drive.
Simply insert the memory card of your choice into its corresponding card slot located on the left panel of the photo frame.
Getting photos and files onto your picture frame for viewing couldn't be easier!

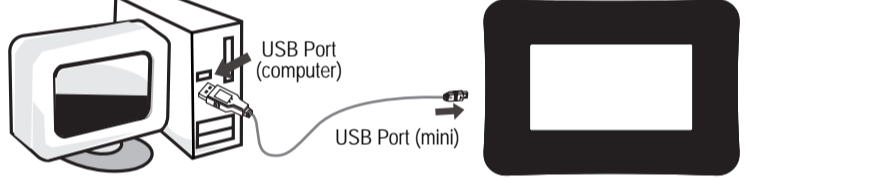


Do not connect the power plug to a power outlet other than that which is indicated here or on the label as this may result in the risk of fire or electric shock. Use only AC adapters of the type specified here. Failure to do so may cause a fire or damage the player.

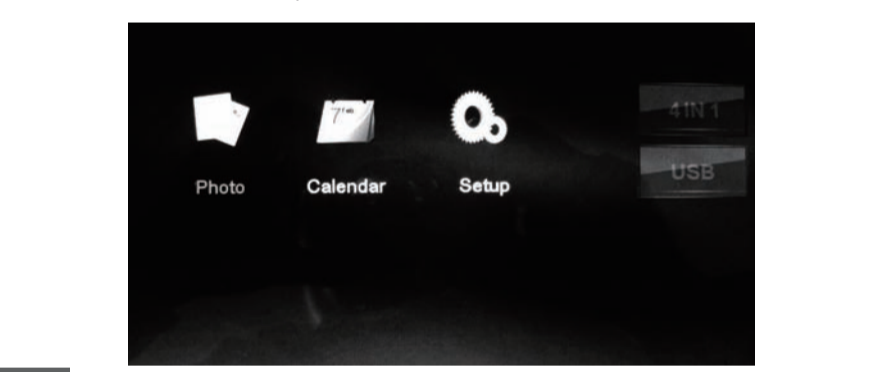
GETTING STARTED

- Turning Your Photo Frame On/Off: To turn your photo frame on, set the Power Switch to the "On" position. To turn your photo frame off, set the Power Switch to the "Off" position.

Connecting to a Computer: Connect the photo frame to your computer with a USB cable. Upon connection, your computer will automatically recognize the memory cards installed in your photo frame.



Make sure that there's no USB flash drive connecting to the DP frame before connecting the DP frame to a computer. Upon turning on the power, your photo frame will display the "Main menu" screen shown below.



GETTING STARTED

Inserted a card icon that is in-color indicates that a memory card has been inserted (not installed) in the corresponding slot. No card icon that is grayed-out indicates that a memory card has not been inserted in the corresponding slot and is not available for use. The demo slideshow will automatically start in approximately 8 seconds if you don't press any button.

Photo: Select the Photo icon on the main menu screen and press Enter button to enter the Photo mode. You can press Menu button to enter thumbnail mode, and press Menu button again to exit. To zoom in the pictures, press "+" button.

Zoom: To zoom in the pictures, press "+" button. Each successive press of "+" button will change the level of magnification as shown below: 125% -> 150% -> 175% -> 200% -> 225% -> 250% -> ZOOM OFF.

CALENDAR

Calendar: To view time and date, select Calendar on the main menu screen and press Enter button to confirm. Then the calendar will show as below.



You can adjust the time and date in Calendar setup menu, please refer to Calendar setup in the Setup menu.

SETUP

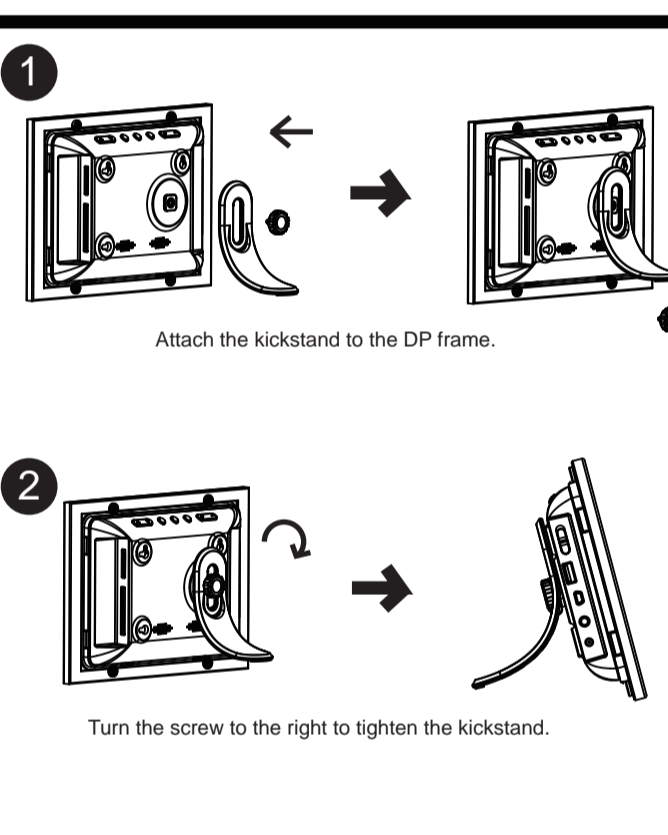
Photo Setup table with columns: Item, Instruction, Default setting. Items include Display Mode, Brightness, Contrast, Saturation, Hue, Transition Effect, Slideshow Repeat.

Calendar Setup table with columns: Item, Instruction, Default setting. Items include Display Mode, Set Date, Set Time, Clock Mode, Alarm Set, Alarm Time.

System Setup table with columns: Item, Instruction, Default setting. Items include Language, Brightness, Contrast, Saturation, Hue, Power On, Power Off, Auto boot time, Auto Shut time, Auto power frequency, Reset.

KICKSTAND

Using the Kickstand



TROUBLESHOOTING

If you have a problem with this device, please read the troubleshooting guide below and check our website at www.cobyusa.com for Frequently Asked Questions (FAQs) and firmware updates. If these resources do not resolve the problem, please contact Technical Support.

ADDRESS: COBY Electronics Technical Support, 150 Knowlton Way, Savannah, GA 31407. EMAIL: techsupport@cobyusa.com. WEB: www.cobyusa.com. PHONE: 800-727-3592.

- The player does not turn on. Make sure the unit has been powered on manually (i.e., the Power Switch has been physically set to the ON position). Ensure that the power cord has been properly connected to the power outlet. I cannot select a memory card. Ensure that a memory card has been installed. Ensure that the memory card is properly installed. Ensure that the memory card is not defective. The alarm does not work. Make sure the Alarm Setting is set properly in Calendar Setup in Setup Menu.